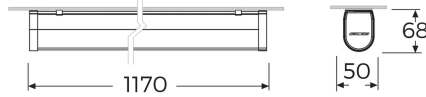
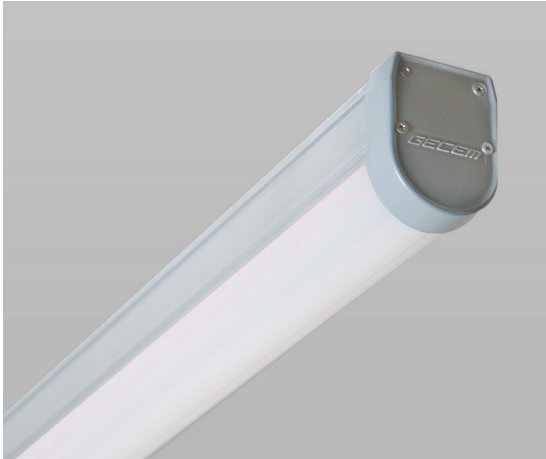


ALUMA

GCP 1220WA SG40



Product Features and Key Data

| | |
|---|--|
| Applications : | Warehouse - storage area - parking area - loading area - industrial area |
| Luminaire Type : | LED waterproof luminaire |
| Mounting Method : | Surface or suspension |
| Luminaire Optic : | PC diffuser |
| Connected Load : | 20W |
| Colour Temperature : | 4000K |
| Rated Luminous Flux : | 2000 lm |
| Luminous Efficiency : | 100 lm/W |
| Power Factor : | > 0,952 |
| CRI Value : | > 80 |
| UGR : | < 21 (EN124664-1) |
| Photo Biological Class : | Group 0 - No risk |
| Luminaire Colour : | Grey Color |
| Luminaire Body : | Aluminium body polycarbon glass. |
| Electrical version : | With electronic transformer, switchable. |
| Connection method : | Terminal |
| Mains frequency : | 50/60 Hz |
| Mains voltage : | 220 - 240 V |
| Led Service (25°) : | L80 = 50.000 h |
| Driver (220 - 240V) : | Tridonic, Osram, Gecem |
| Ceiling Type : | AB - Gypsum Ceiling TB - Modular Ceiling KB - Clip-in Ceiling |
| Ingress Protection (IP) rating : | IP65 |
| Protection class : | I |
| Impact resistance (IK) : | IK08 |
| Hot wire resistance : | 650 °C |
| Ambient temperature : | -35 - 55 °C |
| Options : | 1 - 3 Hours Emergency Kit, Dali Dimmible |
| Accessories : | Suspension Kit, Sensor |